

To operate X10 home automation modules use X10 CM19A

To operate Z-Wave home automation modules use Aeotec Z-Stick S2

iNet2DVR

Typical Security DVR Interfacing

DVR Video input

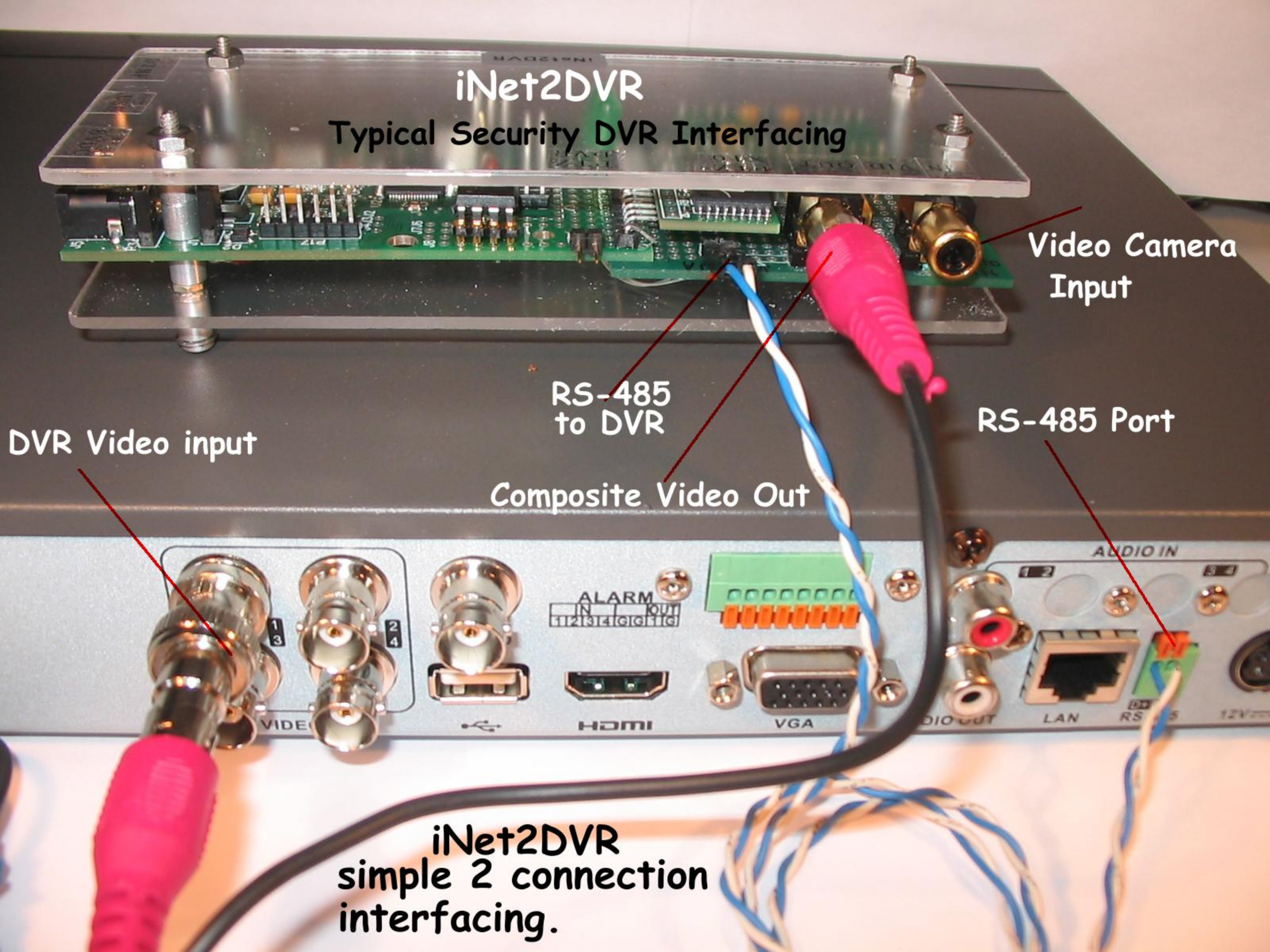
Video Camera Input

RS-485 to DVR

RS-485 Port

Composite Video Out

iNet2DVR
simple 2 connection
interfacing.



Live View

Press "IRIS + " function to
to start iNet2DVR menu

invoke PTZ function

LTD7204 L

PTZ + Iris - PTZ

Refresh, Trees, Split, PTZ, Flag

Camera, Location, Zoom, PTZ, More

Typical Security DVR app on smartphone



Live View



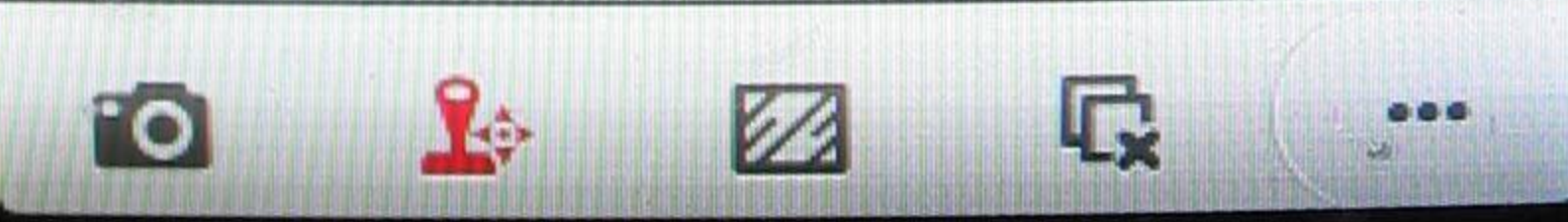
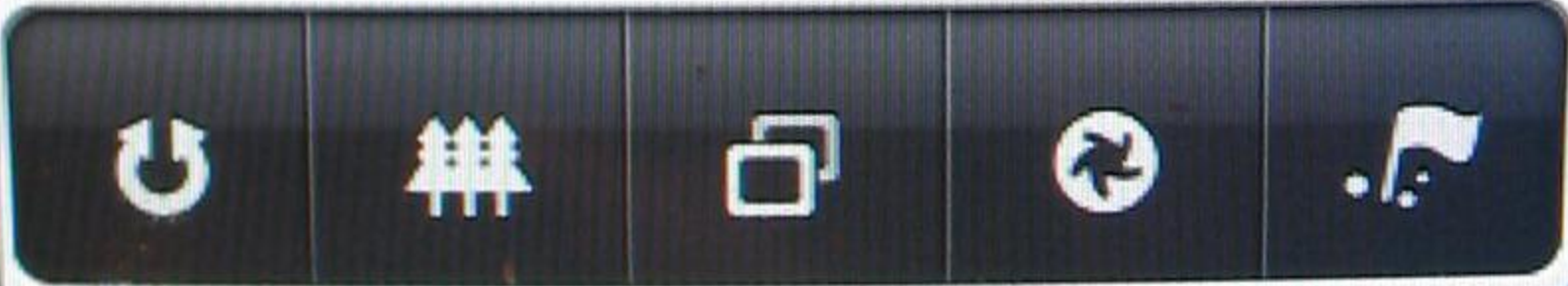
iNet2DVR

V1 .03

- X10
- ZWave
- Aux Pan/Tilt
- Configuraton
- Exit

use PTZ UP, DOWN function to scroll thru menu
 Use Pan RIGHT to select menu item

LTD7204 LAN-Cam 4 (Balanced)



iNet2DVR main menu



Live View



use pan LEFT, RIGHT to select House, Unit code

X10 Devices

Type: MODULES

Pan UP & DOWN

Macro: 1 Free Defs:50

Page: 1

to select value/operation

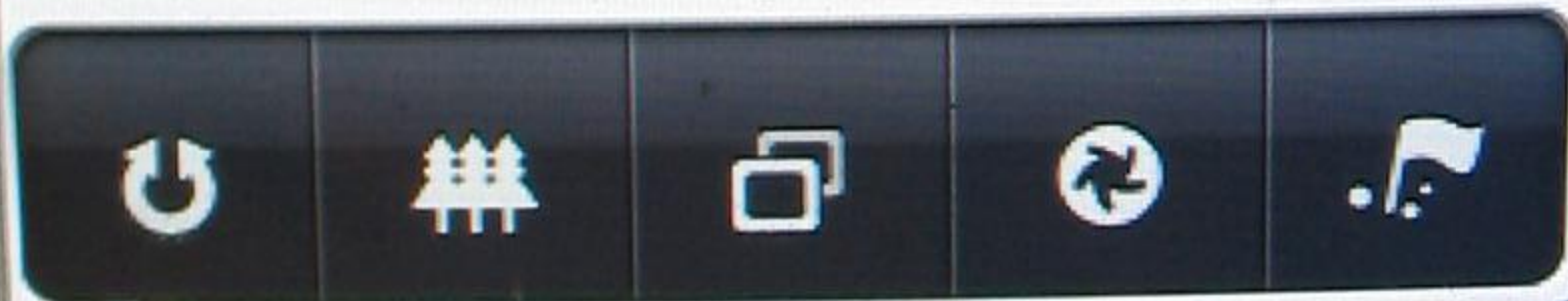
No	House	Unit	Cmd
01	G	01	ON
02	G	02	?
03	G	03	?
04	G	04	?

X10 module code G-1

turns ON when Macro #1 is executed

Save
Exit

LTD7204 LAN-Cam 4 (Balanced)



Example Defining Macro #1
on a X10 automation module
similar for Z-Wave modules

Live View

X10 Menu

- Devices
- Execute Macros
- Exit

LTD7204 LAN-Cam 4 (Balanced)

Control icons: Refresh, Trees, Copy, Rotate, Flag

Bottom navigation icons: Camera, Location, Zoom, Split, More

To execute Macros which control X10 modules pan Down to "Execute Marcos" and pan Right to select

Live View

X10 Macro

- M1 :
- M2 :
- M3 :
- M4 :
- M5 :
- M6 :
- M7 :
- M8 :

Pan UP & DOWN to select Macro #
 Pan Right to excute Macro

Exit

LTD7204 LAN-Cam 4 (Balanced)

Control bar with icons: Refresh, Trees, Copy, Rotate, Flag

Bottom navigation bar with icons: Camera, Location, Zoom, Close, More

Macro Execution Menu